

UK Manufactured Carports



UK Manufactured



Supply Only



Full Turnkey
Solution



Structurally Certified



Custom Colours

Carport Model:

Y-Port LITE

SLCP Y-Port LITE

Our LITE range are an uncladded version of our premium car port models. They provide concealed rainwater management, full protection from UV and most weather conditions. The span between structural steel posts is over 4 meters providing space for EV Car chargers and Inverter casing if required. The minimum port size is 2 bay (6 parking spaces), extendable to the projects requirements. In addition, we offer a full customised solution if required.

Options



Rainwater Drainage

Comes as standard in all Sunlite Carports



LED Lighting

Aluminium cased linear LED Lighting with daylight motion sensors



Custom colours

Option to specify colour of powder coated finish of all cladding



EV Charging

We can incorporate EV Charging points within the structure or separate pedestals



Vehicle Management

Wheel stops, barriers, line painting, symbol painting

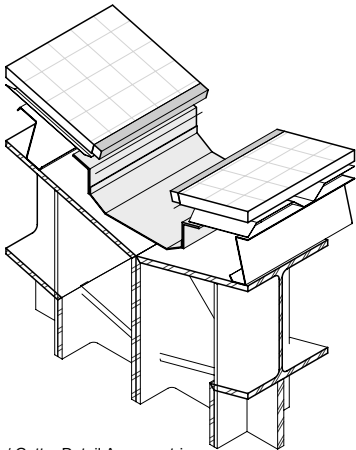
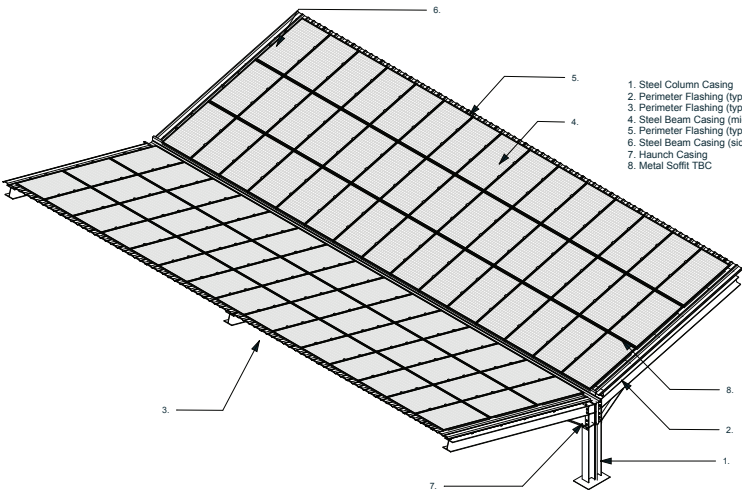
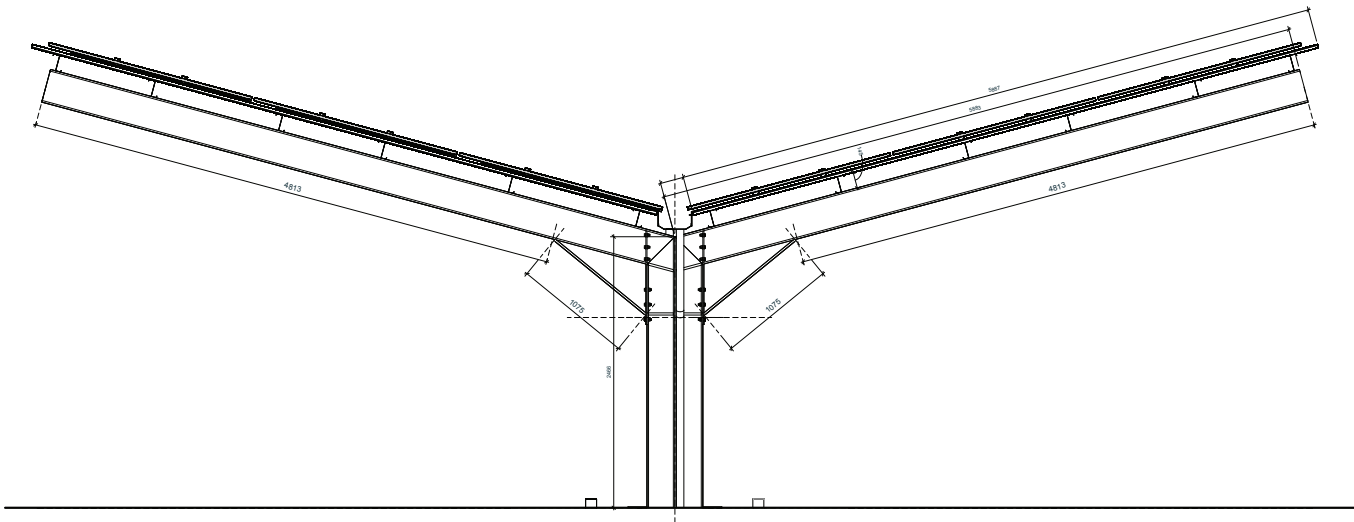
Orientation

Y-Port LITE is designed to be East/West facing.



Carport Model:
Y-Port LITE

Technical Specifications



Eaves / Gutter Detail Axonometric

